

B SERIES

Peristaltic dosing pumps for discontinuous use

The B series is a range of peristaltic dosing pumps with fixed and variable flow rates designed for discontinuous use.

GENERAL FEATURES

- Flow Rates up to 12 l/h.
- Maximum operating pressures of up to 3 Bar.
- **B-F** series with flow fixed – Power supply 230V.
- **B3-V** series Flow Rate Adjustment: 10 – 100%
– Variable power supplies from 90 – 260 V as standard – Optional power supplies include 12 Vdc, 24 Vdc or 24 Vac.
- Available with removable power cable.
- Peristaltic tubing available in Santoprene® (standard), Silicone, Norprene® or Tygon.
- The peristaltic tubing is fitted with SS clamps.
- Supplied with wall mounting bracket.



ACCESSORY KIT OPTIONS

Standard Kit (suitable for most water treatment applications)

PVC/FPM injection valve, PP/FPM foot filter, 2m each of PVC suction & LDPE discharge tubing.

'Brightener' Kit

Nickel plated brass/FPM injection valve, SS foot filter, 2m each of PVC suction & LDPE discharge tubing.

Detergent KIT (suitable for use with detergents)

PP/EPDM injection valve with 90° hose nipple, SS foot filter, 2m each of PVC suction & LDPE discharge tubing.



TECHNICAL FEATURES

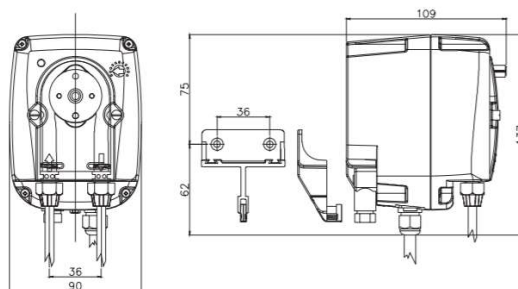
Version	Flow Rate l/h (US GAL/h)	Pressure bar (psi)
0103	1 (0.26)	3 (43)
0101	1,5 (0.39)	1,5 (21)
0303	3 (0.79)	3 (43)
0301	3 (0.79)	1,5 (21)
0403	4 (1.06)	3 (43)
0601	6 (1.59)	1 (14)
1001	10 (2.60)	1 (14)
1201	12 (3.17)	1 (14)

CODES

B-F	Version
PBF4437474	0101
PBF44374574	301

B3-V	Version
PBV4337274	0103
PBV4336574	403
PBV4337374	1201

DIMENSIONS (MM)



B SERIES

Peristaltic dosing pumps