



HD50 SERIES

WEB DATA LOGGER



What is a logger?

A measuring device that can store the measurements in a memory. This memory can be located locally (in the instrument) in a database (on a PC or server) or in the cloud.

What is the HD50 logger series?

It is a logger series that supports:

- Ethernet with RJ45 connector
- Wi-fi

Any office building has LAN/WLAN network: this means that this logger can be applied everywhere without any further installation or adjustment.

Why did we develop the HD50?

With the HD50 it is possible to start from 1 logger and extend it to a practically unlimited network of loggers. The HD50 settings can be opened from a web browser, as it has a built-in webserver. This way it is also possible to monitor the actual measurements.

Delta OHM already has the HD35 series, based on Sub-GHz communication. In some cases when networks are very wide or complex or divided into more than 1 building, a mix of cabled, WiFi and Radio Frequency loggers can be the best solution. The HD50 series has the possibility to be integrated in such hybrid networks.



Where to use this device?

Any indoor place where a user is interested in seeing measurements 'over time':

- a warehouse with goods that need to be stored in a controlled environment;
- electronics that need to be stored with controlled humidity circumstances;
- pharmaceutical products or medicines that need to be controlled in temperature;
- an office building where comfort conditions are extremely important for people working;
- a frozen food storage where it is important to get an alarm when the temperature gets too high;
- in food industry where regulations are applied to monitor the temperature and to save the data to be able to provide this data when authorities ask for it.

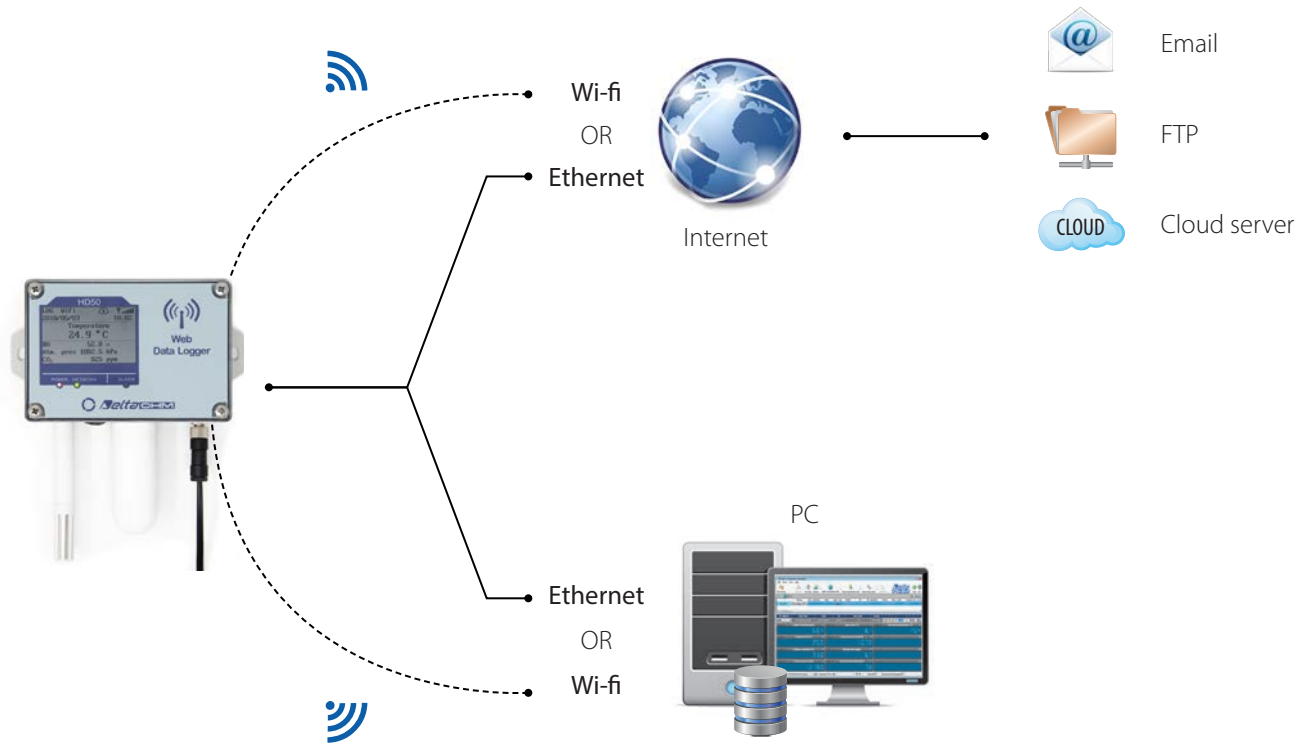
There are many applications where it is important to measure and save the measurement information.

What benefits do this logger series have?

- Easy to use: it can be directly accessed by a web browser.
- It can be used stand alone or in networks with hundreds of loggers.
- Additional software for all solutions: database locally on PC, database on local server, cloud based.
- Wide range of standard sensors (°C / RH / LUX / Atm / CO₂ / Differential Pressure / PM).
- It can support practically 'any signal': universal inputs make it possible to integrate any transmitter with standard voltage or current output.
- Optional software available for CFR21part11 (pharmaceutical market).
- The logger can send an email alarm when a value is higher or lower than the set threshold.

Connectivity

The data loggers can be connected to a local network via the **Wi-Fi** or **Ethernet** interface



Logging

A measuring interval and a logging interval can be set inside the data logger. The stored value is the average of the measures acquired in the logging interval. The acquired data are stored in the internal memory and sent via Internet (if the data logger is connected to a local network with Internet connection). When the data logger memory is full, it can be chosen to stop the logging or to continue overwriting the older data (cyclic logging). It is possible to log all the available quantities or, in order to increase the memory capacity, only the quantities of interest.

Alarms

For each detected quantity, two alarm thresholds can be set by the user. The exceeding of a threshold is signaled acoustically by means of the internal buzzer, visually by lighting the alarm LED on the front panel and remotely by sending alarm **e-mails**. An alarm hysteresis and a delay in the generation of the alarm can be configured for each detected quantity.

Integrated Web Server

Thanks to the integrated web server, you can configure the data logger and view the real time measurements from any PC, tablet or smartphone. These have to be connected to the same local network of the data logger by simply using a web browser and typing the IP address of the data logger, without the need to install specific software. You can see the measurements in the form of a graph or in a table.



Web server: monitor of measurements with CO₂ measurement in alarm



Web server: graph of measurements

Cloud

In addition to real time monitor and configuration through integrated web server, you can have data storage and historical data visualization through a web interface using our Cloud platform. The data logger can automatically send, at regular intervals, the data to an HTTP server, and in particular to the Delta OHM portal www.deltaohm.cloud. The data sending interval is configurable.



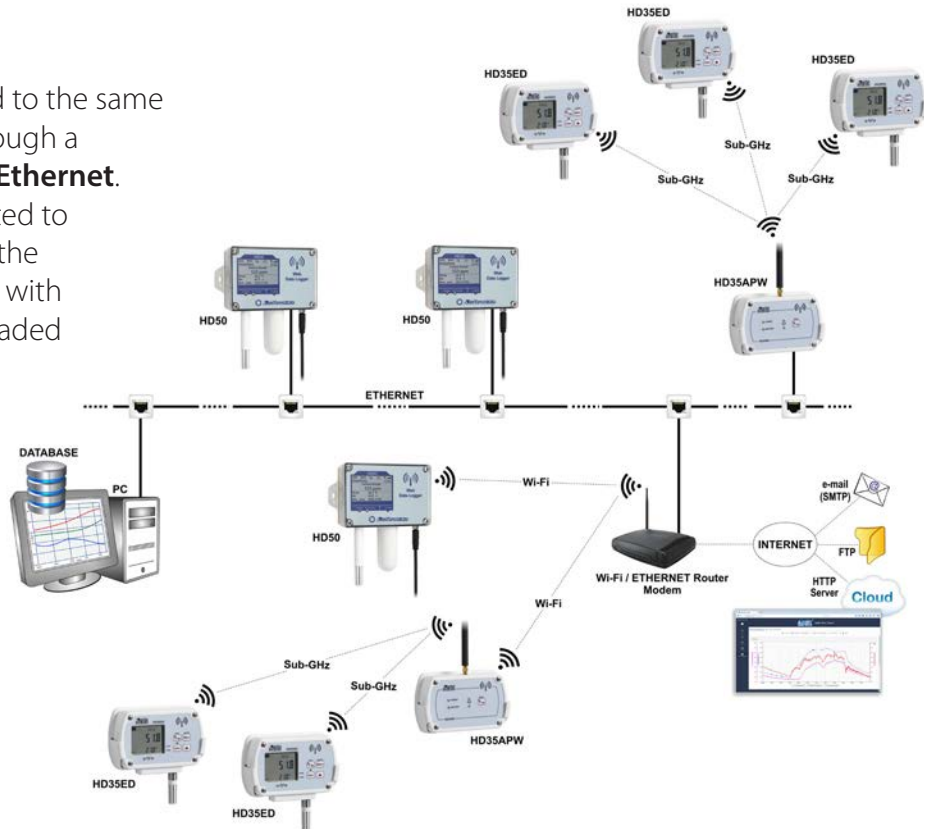
Cloud: viewing measurements with a Web browser from anywhere in the world by using mobile devices (tablet, smartphone, notebook)

Product information Web data logger

Multiple devices can be connected to the same local network, either via **Wi-Fi** (through a router or Wi-Fi access point) or via **Ethernet**.

The data of all the devices connected to the network can be collected into the same database and can be viewed with a "Cloud" service or can be downloaded via e-mail or FTP.

Example of a hybrid network (Wi-Fi + ETHERNET) with multiple data loggers: HD50 series + HD35 Sub-GHz series



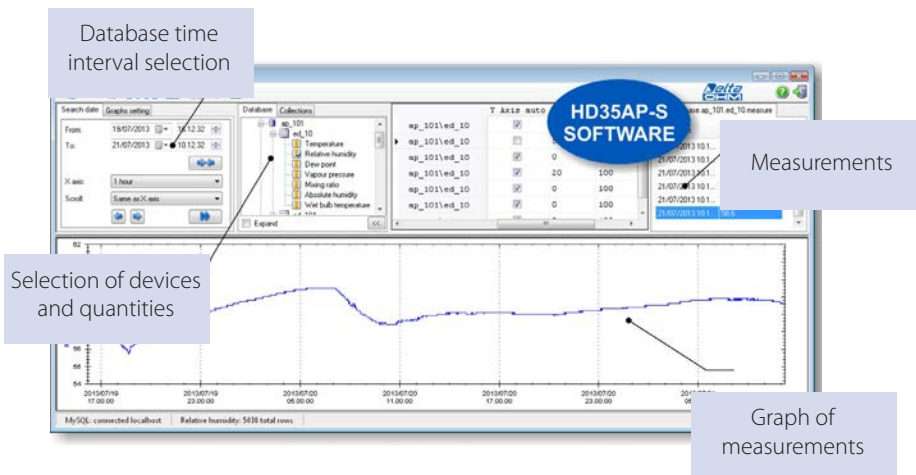
PC Application Software



The PC software **HD35AP-S** supplied with the data logger allows:

- Configuring
- Viewing the real time measurements, both graphically and numerically
- Downloading the data in a database automatically at regular intervals or upon user request

HD35AP-S software: viewing the real time measurements



The software HD35AP-S is applied to configure the datalogger and can be used for simple network. For more extended networks use HDServer1

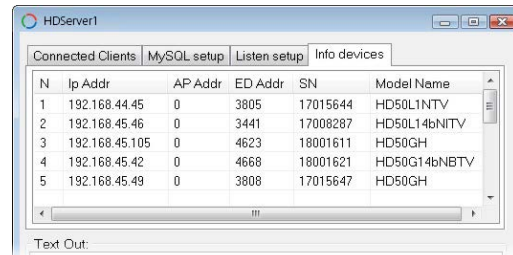
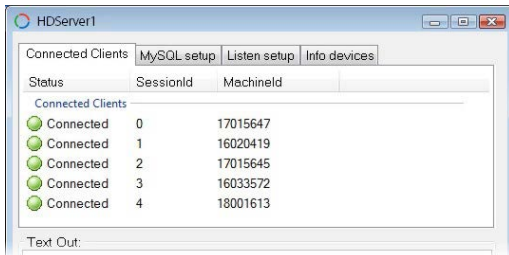
HD35AP-S software: database

Product information Web data logger

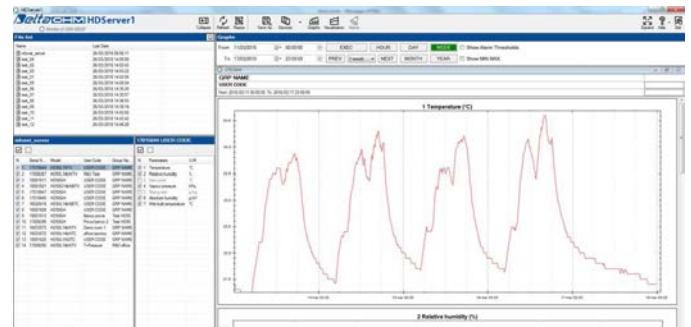
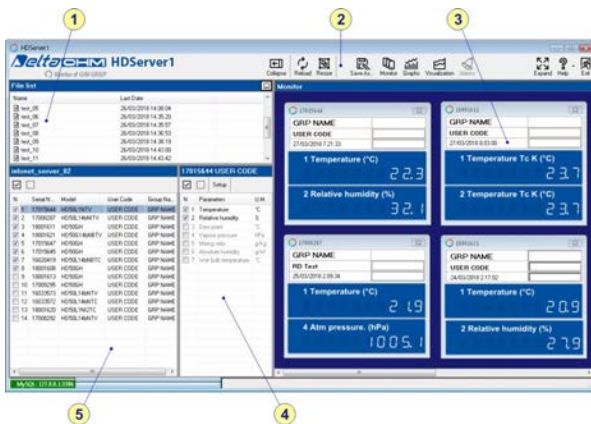
HDServer1

The HDServer1 software allows receiving, viewing and entering into a database the measurements automatically transmitted by loggers. Differently from the HD35AP-S, it supports multiple and simultaneous TCP/IP connections with many HD50 and HD35APW. An IP scanner functionality allows to easily identify and add all devices available on the network. The software consists of two parts that work independently:

- The Server part, which receives and enters in the database the data coming from the devices.



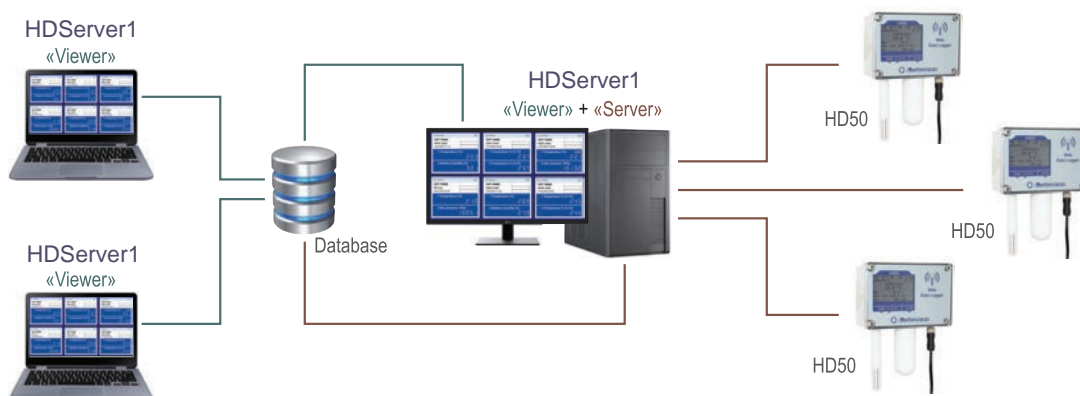
- The Viewer part, which displays the data of the database on the PC monitor



Viewer function

1. List of saved visualization
2. Toolbar
3. Measurement panels of the "Visualization" selected in the list of "Visualizations"
4. List of the quantities of the device selected in the list of devices
5. List of devices belonging to the selected visualization.

The software can be installed in multiple PCs. The Server part is normally active in only one PC, while the Viewer part can be active simultaneously in several PCs.

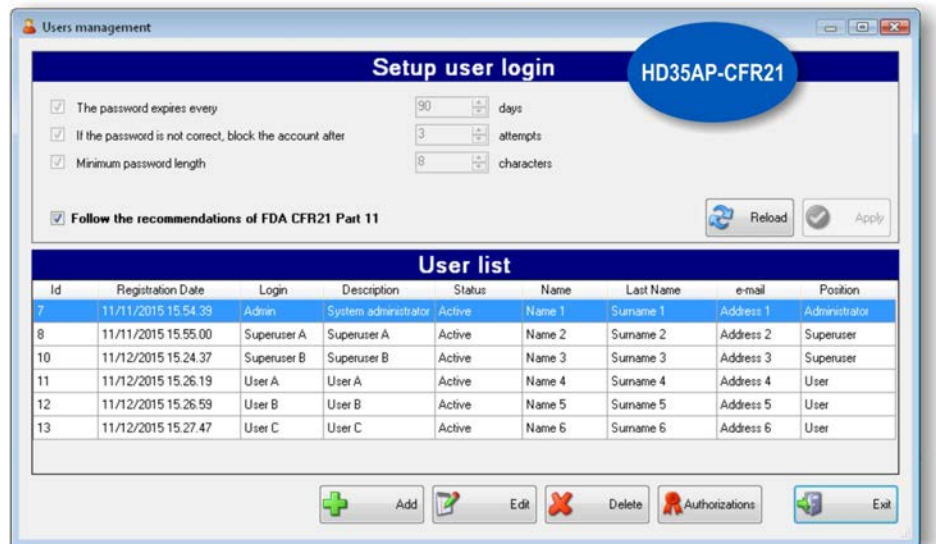


CFR21 Option

In addition to the features of the basic softwares, the **HD35AP-CFR21** option allows the protection of recorded data and configuration in response to **FDA 21 CFR part 11** recommendations. In particular:

- o The traceability of activities (audit trail) performed with the software: which users are connected and what changes are made to the configuration of the data logger.
- o The management of users access for the data logger configuration and viewing of data in the database. Each user can be assigned a different password for using the software. Three levels of access are available (Administrator, Super-user and standard User). For each level, the allowed operations can be defined.

HD35AP-CFR21 option:
users permissions










The HD35AP-CFR21 option works with USB hardware key connected to a PC belonging to the same local network of the PC in which the HD35AP-S software is installed.









Note: if the HD35AP-CFR21 option is used, the data logger integrated web server allows only viewing the measurements, but not the data logger configuration, because the settings changed via web server can not be traced.

Available HD50... series models

In order to highlight the physical quantities measured by the data loggers, the ordering codes include some identification characters for the various quantities. (see legend below)

Model	MEASURES								INPUTS
									
	NTC10K	Pt100	RH	Patm	ΔP	CO ₂	Lux	PM	
HD50N/...TC	•								1 / 2 or 3
HD50NTV	•								Fixed probe
HD501NTC	•		•	Opt.					1
HD5017PTC		•	•	Opt.					1
HD501NTV	•		•	Opt.					Fixed probe
HD501NB...TV	•		•	Opt.		•			Fixed probe
HD501NI...TCV	•		•	Opt.			•		1 1 (illum. probe) Fixed T/RH probe
HD501NB...I...TCV	•		•	Opt.		•	•		1 (illum. probe) Fixed T/UR and CO ₂ probes
HD501N4r1ZTV	•		•		•				+/- press. inputs Fixed T/RH probe
HD50PM								•	Internal sensor
HD50GH	Transmitters with 0÷20 mA, 4÷20 mA, -50÷50 mV, 0÷50 mV, 0÷1 V or 0÷10 V output Pt100 / Pt1000 sensors, thermocouples K, J, T, N, E Sensors with potentiometric output								4 terminal header inputs

Opt. = optional internal atmospheric pressure sensor (HD5014b... models)

	1 = Humidity		7P = Temperature with Pt100/PT1000 sensor
	4b = Atmospheric pressure (barometer)		B = Carbon dioxide (CO ₂) low range (0...5,000 ppm) B2 = Carbon dioxide (CO ₂) high range (0...10,000 ppm)
	4r = Differential pressure (± 125 Pa)		I = Illuminance low range (0...20,000 lux) I2 = Illuminance high range (0...200,000 lux)
	N = Temperature with NTC10K sensor (N/1 = 1 channel, N/2 = 2 channels, N/3 = 3 channels)		PM = Particulate Matter (PM1.0, PM2.5, PM4.0, PM10)

To indicate the fixed probe or the probe with cable, the following indications are used:

TC = Probe with cable (M12 connector)

TV = Fixed vertical probe without cable

TCV = Fixed sensors + photometric probe with cable

The data loggers are also available with **custom** (option **L**, except for the models HD50PM and HD50H) or **graphic** (option **G**) **LCD**.



Graphic LCD



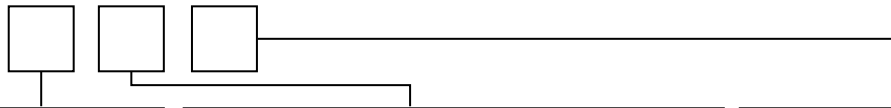
Custom LCD

LEDs indicate the status of power supply, LAN/WLAN local network connection and alarm

Product information Web data logger

Ordering codes

HD50...



TYPE OF LCD:

Blank = without LCD
(not available for HD50H)
L = with custom LCD
(not available for HD50PM and HD50H)
G = with graphic LCD

MEASURED QUANTITIES:

1 = humidity
4b = atmospheric pressure (Barometer)
4r1Z = differential pressure with auto-zero (± 125 Pa)
N = temperature NTC10K sensor:
N/1=1 channel, **N/2**=2 channels, **N/3**=3 channels
7P = temperature Pt100 sensor
B = carbon dioxide (CO₂): **B**=low range, **B2**=high range
I = illuminance: **I**=low range, **I2**=high range
PM = particulate matter
Blank = standard analog sensors

PROBE TYPE:

H = inputs for standard analog sensors
R-MB = DIN rail version with input for RS485 Modbus-RTU sensors
TC = probe with cable
TV = fixed vertical probe without cable
TCV = fixed sensors + photometric probe with cable

Technical Specifications

Measuring and logging interval	1, 2, 5, 10, 15, 30 s / 1, 2, 5, 10, 15, 30, 60 min
Internal memory	Circular management or stop logging if full. The number of samples that can be stored depends on the number of quantities selected for logging - Min=291,420 / Max: 1,165,680 values.
Interfaces	Wi-Fi (IEEE 802.11b/g/n) and Ethernet (RJ45 connector)
Protocols	Proprietary TCP/IP, MODBUS TCP/IP, SMTP, FTP, HTTP, NIST
Wi-Fi security standards	WEP64, WEP128, WAP, WAP2
Alarm	Acoustic by means of the internal buzzer, LED on the front panel, sending of e-mails.
Power supply	External 7...30 Vdc (no internal battery) PoE (Power over Ethernet) power supply via optional POE-SPLT12M8 splitter
Power consumption	40 mA @ 24 V / 80 mA @ 12 V / Peak < 200 mA
Display	Optional custom or graphic LCD
LED indicators	Power supply, Network connection (LAN/WLAN) and Alarm
Operating temperature and humidity	-20...+70 °C (except HD50PM and HD501N4r1ZTV) -10...+60 °C (HD50PM) / -5...+50 °C (HD501N4r1ZTV) < 100%RH non-condensing
Housing	Material: Polycarbonate Dimensions: 130 x 90 x 40 mm (156 x 90 x 44 mm with flanges) Protection degree: IP 54 (with protective cap on RJ45 connector)
Weight	300 g approx.
Installation	Indoor wall mount

Installation

Wall mount installation by using the appropriate flanges to be fixed on the back of the housing.





Your direct contact to us



+39 049 897 7150



info@deltaohm.com



Headquarters

GHM Messtechnik GmbH
GHM GROUP CORPORATE
Tenter Weg 2-8
42897 Remscheid | GERMANY

Center of Competence

GHM Messtechnik GmbH
GHM GROUP – Greisinger
Hans-Sachs-Straße 26
93128 Regenstein | GERMANY
Phone +49 9402 9383-52
info@greisinger.de
www.greisinger.de

GHM Messtechnik GmbH
GHM GROUP – Honsberg
Tenter Weg 2-8
42897 Remscheid | GERMANY
Phone +49 2191 9672-0
Fax +49 2191 9672-40

GHM Messtechnik GmbH
GHM GROUP – Martens
Kiebitzhörn 18
22885 Barsbüttel | GERMANY
Phone +49 40 67073-0
Fax +49 40 67073-288

GHM Messtechnik GmbH
GHM GROUP – Imtron
Carl-Benz-Straße 11
88696 Owingen | GERMANY
Phone +49 7551 9290-0
Fax +49 7551 9290-00

Delta OHM S.r.l. a socio unico
GHM GROUP – Delta OHM
Via Marconi 5
35030 Caselle di Selvazzano
Padova (PD) | ITALY
Phone +39 049 8977150
info@deltaohm.com
www.deltaohm.com

Valco srl
GHM GROUP – Val.co
Via Rovereto 9/11
20014 S. Ilario di Nerviano
Milano (MI) | ITALY
Phone +39 0331 53 59 20
valco@valco.it
www.valco.it

GHM GROUP International

Austria
GHM Messtechnik GmbH
Office Austria
Breitenseer Str. 76/11/36
1140 Vienna | AUSTRIA
Phone +43 660 7335603
a.froestl@ghm-messtechnik.de

Brazil & Latin America
GHM Messtechnik do Brasil Ltda
Av. José de Souza Campos,
1073, cj 06 | Campinas, SP
13025 320 | BRAZIL
Phone +55 19 98275 0069
info@grupoghm.com.br

Czech Republic / Slovakia
GHM Greisinger s.r.o.
Ovci hajek 2 / 2153
158 00 Prague 5
Nove Butovice | CZECH REPUBLIC
Phone +420 251 613828
Fax +420 251 612607
info@greisinger.cz
www.greisinger.cz

Denmark
GHM Maaleteknik ApS
Maarslet Byvej 2
8320 Maarslet | DENMARK
Phone +45 646492-00
Fax +45 646492-01
info@ghm.dk
www.ghm.dk

France
GHM GROUP France SAS
Parc des Pivolles
9 Rue de Catalogne
69150 Décines (Lyon) | FRANCE
Phone +33 6 60 32 06 35
contact@ghm-group.fr

India
GHM Messtechnik India Pvt Ltd.
209 | Udyog Bhavan
Sonowala Road | Gregaon (E)
Mumbai - 400 063 | INDIA
Phone +91 22 40236235
info@ghmgroup.in
www.ghmgroup.in

Italy for Greisinger & Delta OHM
GHM GROUP – Delta OHM
Via Marconi 5
35030 Caselle di Selvazzano
Padova (PD) | ITALY
Phone +39 049 8977150
info@deltaohm.com

Italy for Honsberg, Martens, Val.co
GHM GROUP – Val.co
Via Rovereto 9/11
20014 S. Ilario di Nerviano
Milano (MI) | ITALY
Phone +39 0331 53 59 20
alessandro.perego@valco.it

Netherlands
GHM Meettechniek BV
Zeeltweg 30
3755 KA Eemnes
NETHERLANDS
Phone +31 35 53805-40
Fax +31 35 53805-41
info@ghm-nl.com
www.ghm-nl.com

South Africa
GHM Messtechnik SA (Pty) Ltd
16 Olivier Street
Verwoerdpark, Alberton 1453
SOUTH AFRICA
Phone +27 74 4590040
j.grobler@ghm-sa.co.za



Visit us: www.deltaohm.com